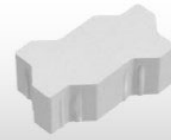
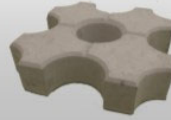
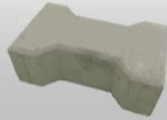


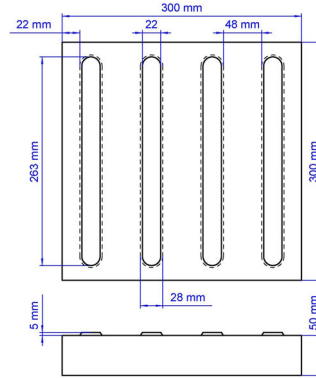
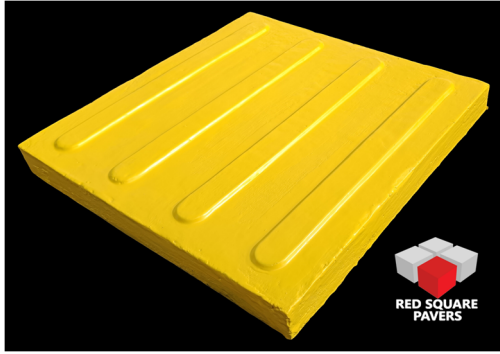


RED SQUARE



PAVERS

Data Sheet Tactile Paver - Directional Type 300 mm



Description:

Directional type tactile paver, for compliance with **Revised IRR of BP 344 (2024)**, 300 x 300 mm, available in three thicknesses: 30 mm, 50 mm and 60 mm Concrete compression testing results greater 3000 PSI.

Colors:

The tactile pavers are in raw concrete color or coated in a rubberized paint which is slightly shiny and absolutely non-slippery. The following colors are available:



Dimensions available:

Tactile Paver	Length	Width	Thickness	Weight	pcs / sqm	Daily Capacity
Directional Type 3.0	300 mm	300 mm	30 mm	6.15 kg	11.2	30
Directional Type 5.0	300 mm	300 mm	50 mm	9.65 kg	11.2	30
Directional Type 6.0	300 mm	300 mm	60 mm	11.45 kg	11.2	30



GWK Enterprises

San Rafael, Barili, Cebu 6036 / +63 908 527 1230 SMART / VIBER / WHATSAPP
red@square.com.ph

