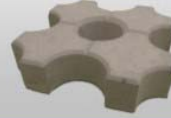
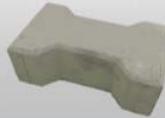


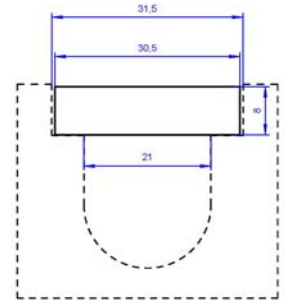
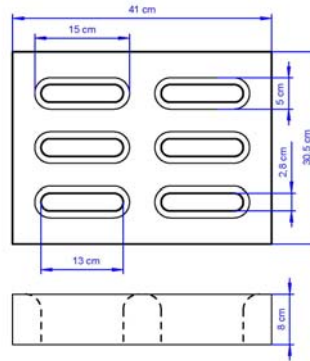


RED SQUARE



PAVERS

Data Sheet Floor Drain - Gully



Description:

Floor drain or gully, 41 x 30,5 cm (16.15" x 12"), color gray, thickness 8 cm (3.15"). For installation as a single drain or in a row to drain larger areas. Concrete compression testing results greater 3000 PSI. Curing time for concrete is 28 days but compression testing should only be carried out after 45 days.

Dimensions available:

Drain / Gully	Length	Width	Thickness	Weight	Daily Capacity
Drain / Gully	41 cm	30.5 cm	8 cm	13.0 kg	10
Drain / Gully	16.15 in	12.0 in	3.15 in	28.7 lbs	10

Colors:

Colors available are gray (natural concrete), red, yellow, black and green in varying intensities. Other colors available on request.

We only use iron oxide pigments imported from the U.S.

IMPORTANT!

If the substrates below the pavers are not well compacted the pavers will give way. Therefore always ensure good compaction during installation.