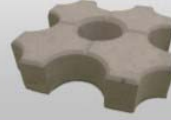
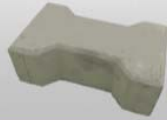


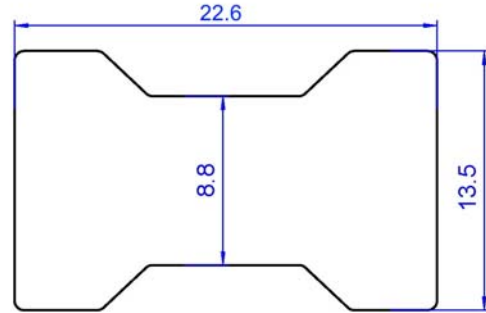


RED SQUARE



PAVERS

Data Sheet Bone-type Paver



Description:

Bone-type paver, **22.6 x 13.5 / 8.8 cm** (8.90" x 5.31" / 3.46"), color gray (natural concrete), thickness **8 cm** (3.15") or **6 cm** (2.36") as specified in **ASTM C936** as the minimum thickness. Trafficable. 40 pieces per square meter. The surface is smooth. Very suitable for driveways and parking areas. The finished pavements have to be swept with fine sand to fill any spaces between the pavers. Curing time for concrete is 28 days but compression testing should only be carried out after 45 days. Concrete compression testing results above 3000 PSI.

Dimensions available:

Bone-type paver	Length	Width	Thickness	Weight	Daily Capacity
Heavy	22.6cm / 8.9"	13.5cm / 5.31"	8cm / 3.15"	4.00 kg	100
Light	22.6cm / 8.9"	13.5cm / 5.31"	6cm / 2.36"	3.00 kg	1000

Colors:

Colors available are gray (natural concrete), red, yellow, black and green in varying intensities. Other colors available on request. **We only use iron oxide pigments imported from the U.S.**

IMPORTANT!

If the substrates below the pavers are not well compacted the pavers will give way individually. Therefore always ensure good compaction during installation.