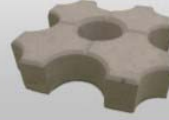
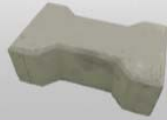


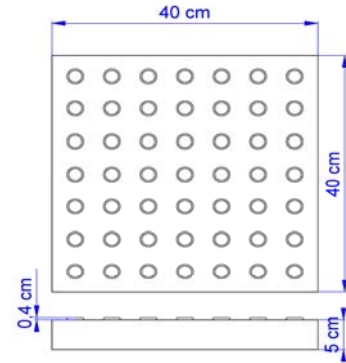
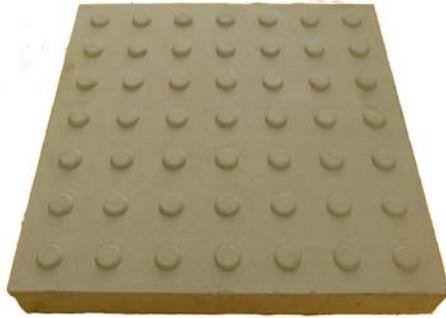


# RED SQUARE



# PAVERS

## Data Sheet Anti Skid Paver



### Description:

Anti skid paver, **40 x 40 cm** (16" x 16"), color gray (natural concrete), thickness **5 cm** (2"). 6.25 pieces per square meter. Concrete compression testing results greater 3000 PSI. Curing time for concrete is 28 days but compression testing should only be carried out after 45 days.

### Dimensions available:

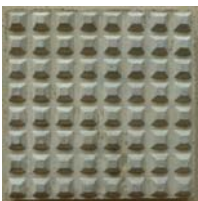
Anti skid paver	Length	Width	Thickness	Weight	Daily Capacity
Anti skid paver	40 cm	40 cm	5 cm	15.0 kg	50
Anti skid paver	16.0 in	16.0 in	2.0 in	33.0 lbs	50

### Colors:

Colors available are gray (natural concrete), red, yellow, black and green. Other colors available on request. **We only use iron oxide pigments imported from the U.S.**

### Comparison to the popular anti-skid paver:

The popular anti-skid paver sized 20 x 20 x 2,5 cm will be really slippery when wet due to the very small area that connects with the foot or tire. It always has to be laid in concrete whereas our big anti-skid paver may be laid in soil if not driven on.



The volume of the Red Square product is 8 times that of the traditional anti-skid paver and 4 times its size.

### IMPORTANT!

If the substrates below the pavers are not well compacted the pavers will give way individually. Therefore always ensure good compaction during installation.